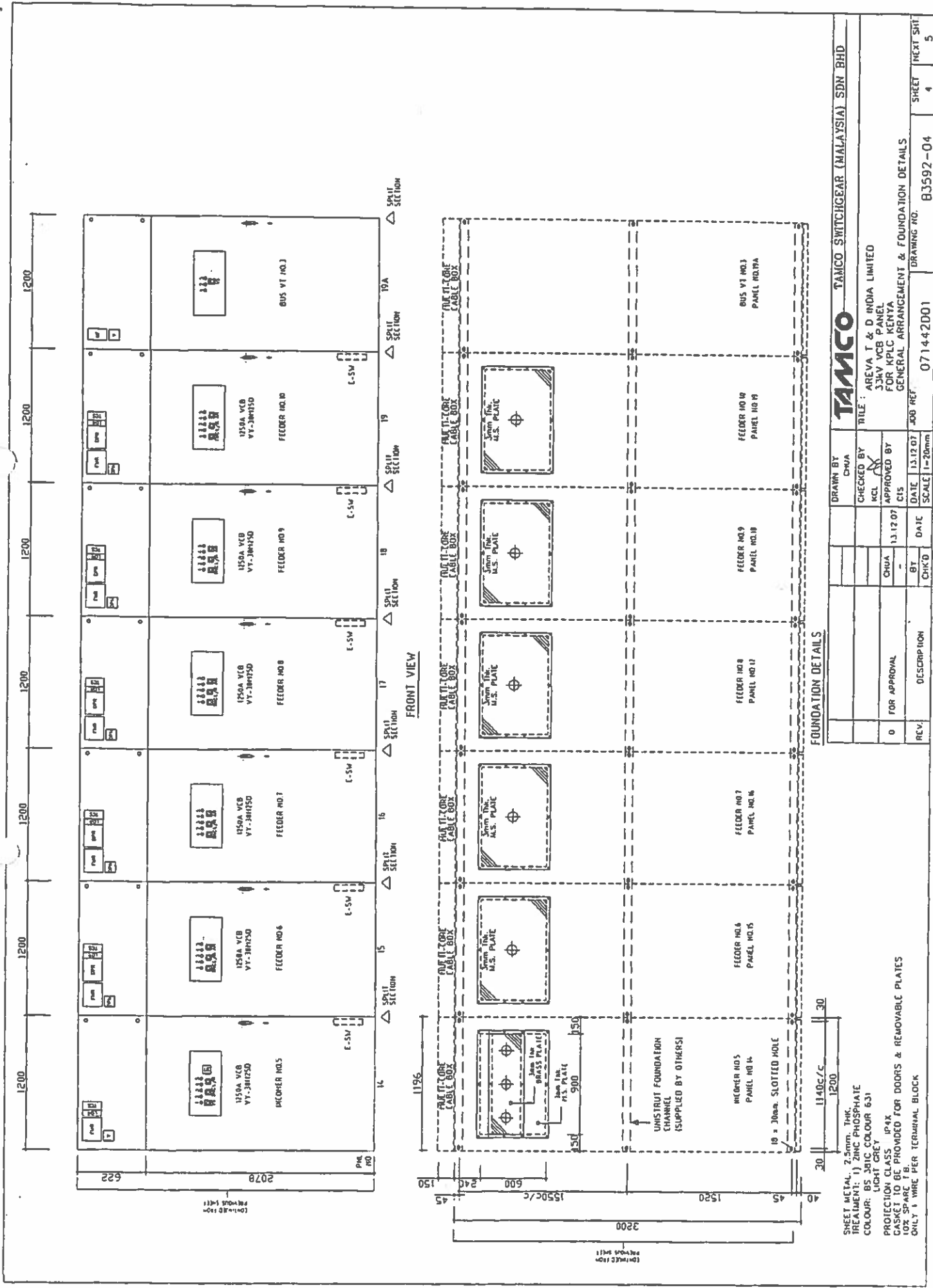


DRAWN BY		CHUA	
CHECKED BY		KEL	
FOR APPROVAL		CHUA	13.12.07
APPROVED BY		CIS	
REV	DESCRIPTION	DATE	SCALE
0		13.12.07	1=20mm
		BY	CHK'D
		DATE	13.12.07
		SCALE	1=20mm

SHEET METAL: 2.5mm THK.
 TREATMENT: 1) ZINC PHOSPHATE
 COLOUR: BS 301C COLOUR 631
 PROTECTION: 500H GREY
 CASNET TO BE PROVIDED FOR DOORS & REMOVABLE PLATES
 10% SPARE T.B. PROVIDED FOR TERMINAL BLOCK
 ONLY 1 WIRE PER TERMINAL BLOCK

TAMCO TAMCO SWITCHGEAR (MALAYSIA) SDN BHD
 TITLE: AREVA T & D INDIA LIMITED
 33kV VCB PANEL
 FOR KPLC KENYA
 GENERAL ARRANGEMENT & FOUNDATION DETAILS
 DRAWING NO. 071442D01
 SHEET 2
 NEXT SH. 3



DRAWN BY CHUA		TAMCO TAMCO SWITCHGEAR (MALAYSIA) SDN BHD	
CHECKED BY MCL		TITLE : AREVA T & D INDIA LIMITED 33kV VCB PANEL FOR KPLC KENYA GENERAL ARRANGEMENT & FOUNDATION DETAILS	
APPROVED BY CIS		JOB REF. 071442001	
DATE 13.12.07	BT CHKB	DRAWING NO. B3592-04	SHEET 4
SCALE 1:20mm	DESCRIPTION		NEXT SHT 5

SHEET METAL, 2.5mm THK.
TREATMENT: 1) ZINC PHOSPHATE
COLOUR: BS 2013 COLOUR 631
LIGHT GREY
PROTECTION CLASS IP4X
CASNET TO BE PROVIDED FOR DOORS & REMOVABLE PLATES
ONLY 1 WIRE PER TERMINAL BLOCK